

Children and Young People Overview and Scrutiny Panel

24 February 2011

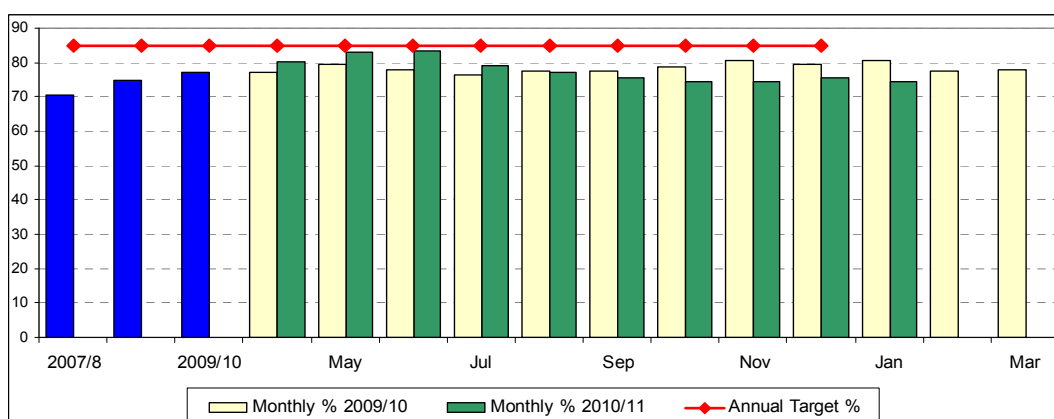
Placement Stability

Introduction

There are 2 measures of for placement stability:

- i) Percentage of children in care for 2.5 years who have been in the same placement for 2 years or more.
- ii) Percentage of children in care having 3 or more placements within a year
 - Plymouth's performance in relation to long term stability is good in comparison to our statistical neighbours.

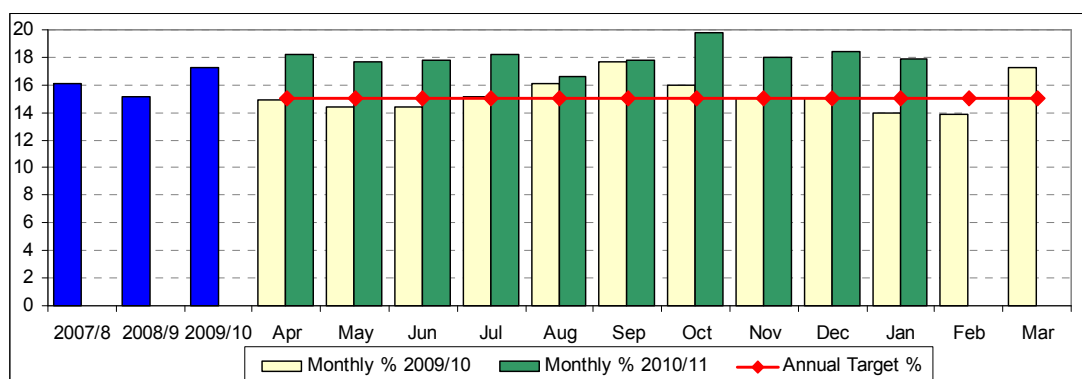
	2007/8	2008/9	2009/10	Apr	May	Jun	Jul	Aug	Sep	Oct	Nov	Dec	Jan	Feb	Mar
Monthly % 2009/10	70.5	74.7	77.0	77.2	79.3	77.8	76.3	77.4	77.5	78.8	80.7	79.4	80.6	77.7	78.1
Monthly % 2010/11				80.1	82.8	83.5	79.2	77.0	75.7	74.6	74.6	75.4	74.6		
Annual Target %				85.0	85.0	85.0	85.0	85.0	85.0	85.0	85.0	85.0	85.0	85.0	85.0



	2003/4	2004/5	2005/6	2006/7	2007/8	2008/9	2009/10
Plymouth %	67.9	65.2	68.6	68.1	70.5	74.7	74.1
SN Comparator %	61.6	61.3	66.1	66.7	64.6	68.5	70.9
England %	64.3	63.0	64.8	65.9	66.5	66.4	68.1
Annual target %				55.0	65.0	75.0	85.0

- Plymouth's performance in relation to children experiencing 3 or more placement moves is less favourable.

	2007/8	2008/9	2009/10	Apr	May	Jun	Jul	Aug	Sep	Oct	Nov	Dec	Jan	Feb	Mar
Monthly % 2009/10	16.1	15.1	17.2	14.9	14.4	14.4	15.1	16.1	17.7	16.0	15.0	15.0	14.0	13.9	17.3
Monthly % 2010/11				18.2	17.7	17.8	18.2	16.6	17.8	19.8	18.0	18.4	17.9		
Annual Target %				15	15	15	15	15	15	15	15	15	15	15	15



	2004/5	2005/6	2006/7	2007/8	2008/9	2009/10
Plymouth %	15.7	18.0	16.4	16.1	15.1	17.2
SN Comparator %	14.1	12.0	14.0	13.0	10.1	11.3
England %	13.1	12.0	12.0	11.0	10.4	10.9
Annual target %	14	16	15	15	13	11

Analysis of Data

An analysis of data was undertaken on 2 February 2011 and the following points were identified:

- Some placement moves reflect positive care planning decisions eg reunification or permanency/adoption.
- The stability performance for children under 16 compares favourably with comparator authorities sharing 11.1% and 13.4% in the last 2 quarters of 2010/11.
- Data for young people over 16 still shows instability. This is understood to be due to the numbers accommodated following the Southwark judgement and the youth homelessness protocol which had 3 placement moves built into it. That protocol has changed and together with lower numbers of young people being accommodated performance will improve.
- Under 5 age group experience 3 + placement moves whilst remaining living with their birth parent as part of the parent and child assessment and care planning within court proceedings.
- The data also includes children who go missing for over 24 hours. Both young people were returned to their placements safely but such episodes count as placements moves.

Action Plan

- Managers analyse placement moves on a monthly basis so we know the reasons for placement moves
- Work is being undertaken through foster carer recruitment and refining matching processes

Mary Brimson

Head of Service – Children & Young People in Care